

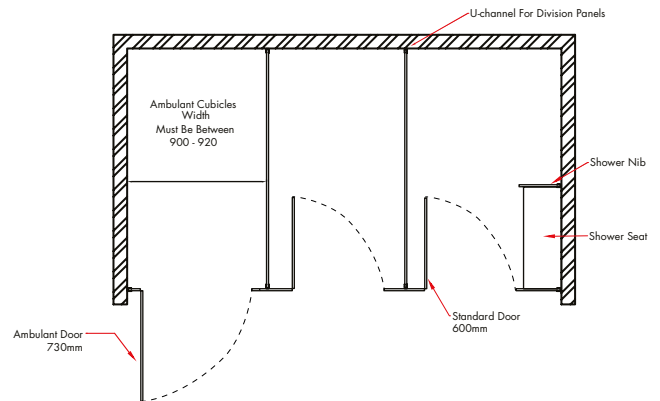
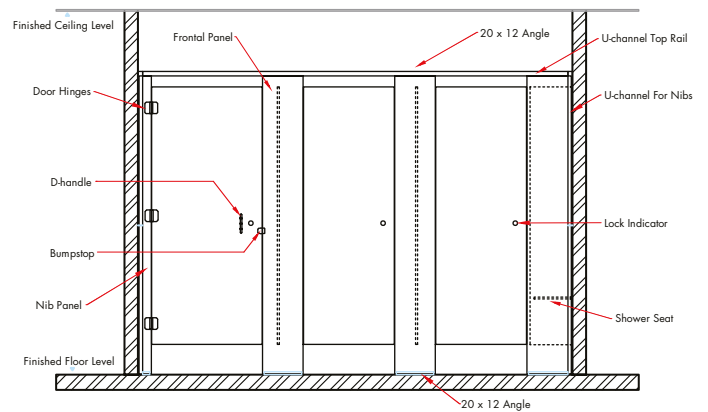
PARTITIONING SYSTEMS

technical document



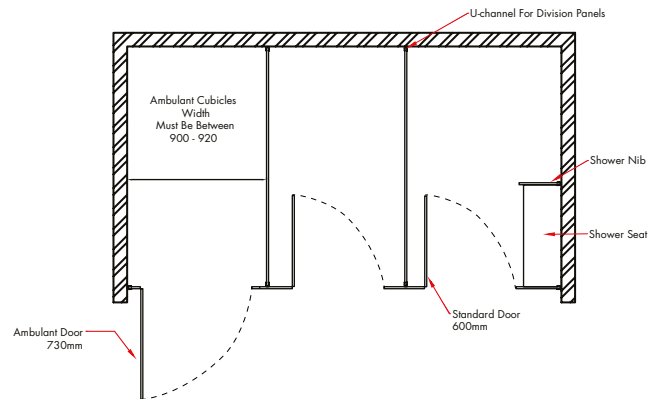
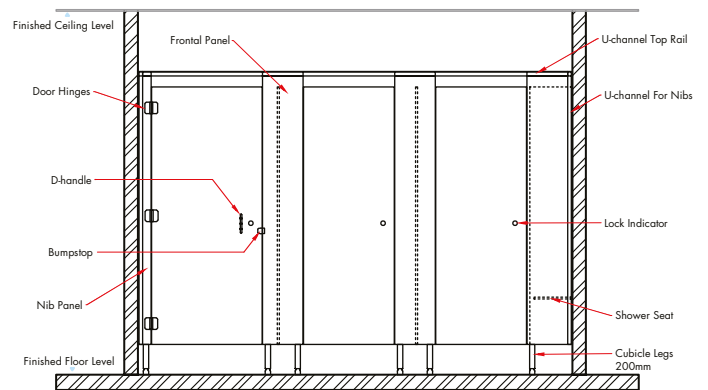
polytec

OVERHEAD BRACED - FLOOR MOUNTED



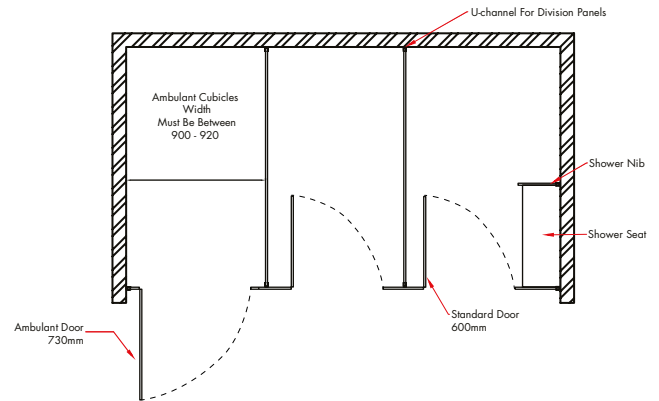
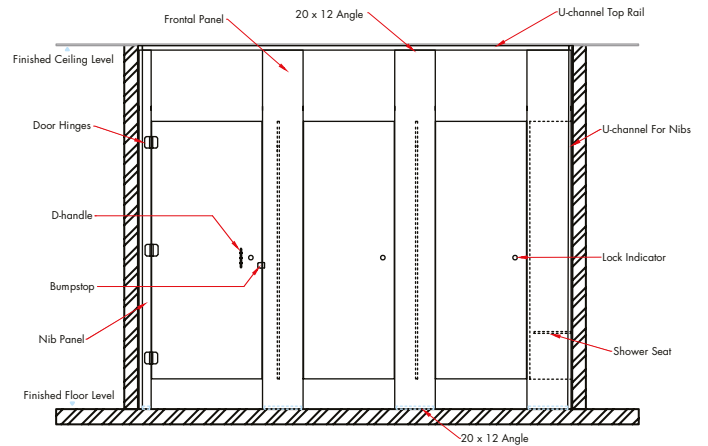
ORDER CODE	OB-FM
PANEL SUBSTRATE	13mm COMPACT laminate
FEATURES	Overhead U-channel brace (not full roof height) with L-bracket floor mount and 3 hinges per door. Note: standard overall height set at 2000mm from floor.
HARDWARE	Snap in door insert, concealed spring hinge, 300 series lock and bumper, hat & coat hook, L-shape extrusion for floor mounting.
DELIVERY & INSTALLATION	Supplied flat packed with plans for your own installation.
WARRANTY	polytec COMPACT laminate products carry a 10 year warranty, refer to the warranty terms and conditions on the polytec website for more information. Hardware carries a 1 year warranty supplied by Metlam Australia.
HOW TO SPECIFY	Partitioning System materials will be polytec system OB-FM in colour

OVERHEAD BRACED - PEDESTAL MOUNTED



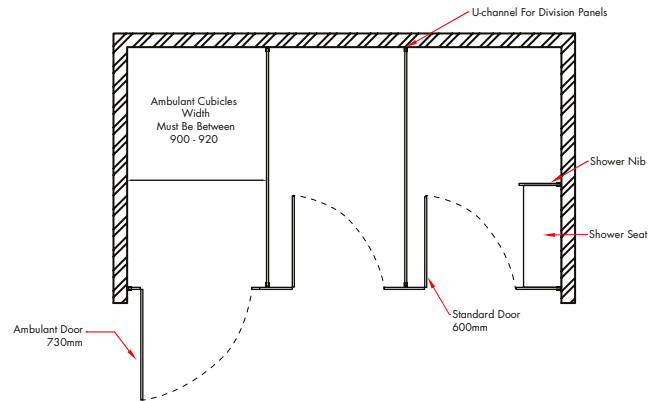
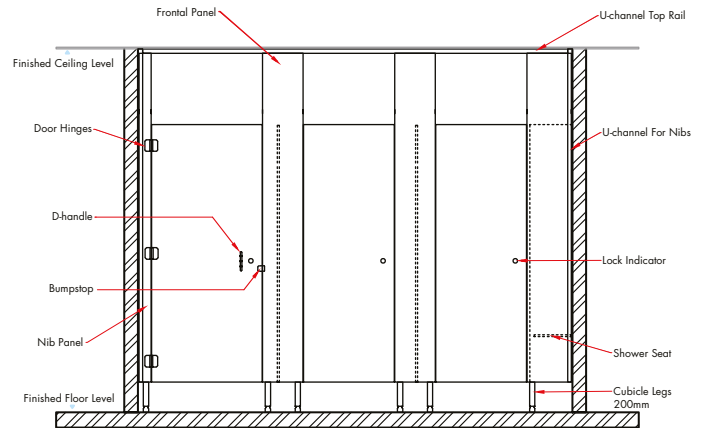
ORDER CODE	OB-PM
PANEL SUBSTRATE	13mm COMPACT laminate
FEATURES	Overhead U-channel brace (not full roof height) with pedestal leg mount and 3 hinges per door. Note: standard overall height set at 2000mm from floor.
HARDWARE	200mm high aluminium adjustable legs, snap in door insert, concealed spring hinge, lock set and bumper, hat & coat hook.
DELIVERY & INSTALLATION	Supplied flat packed with plans for your own installation.
WARRANTY	polytec COMPACT laminate products carry a 10 year warranty, refer to the warranty terms and conditions on the polytec website for more information. Hardware carries a 1 year warranty supplied by Metlam Australia.
HOW TO SPECIFY	Partitioning System materials will be polytec system OB-PM in colour

FH - CEILING BRACED - FLOOR MOUNTED



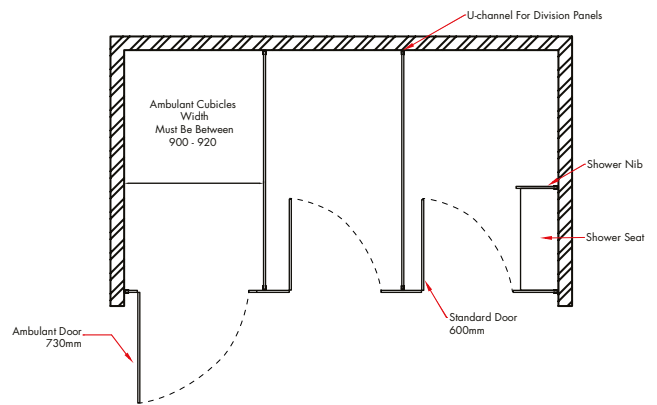
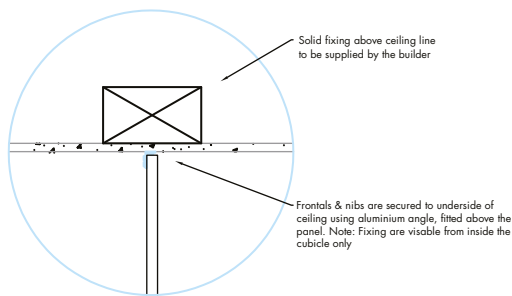
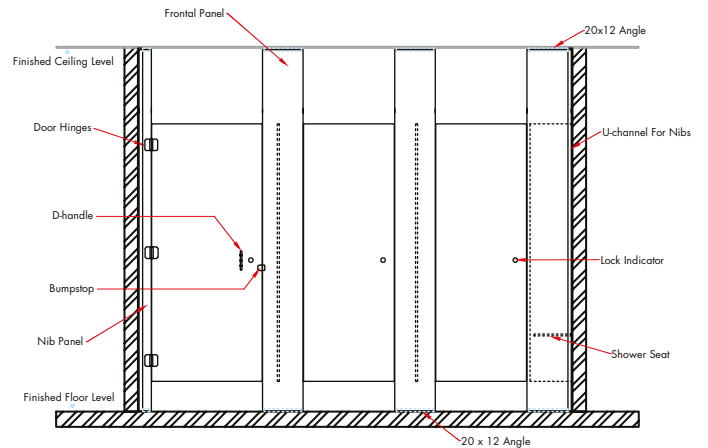
ORDER CODE	FH-CB-FM
PANEL SUBSTRATE	13mm COMPACT laminate
FEATURES	Full height front panel with ceiling U-channel brace, L-bracket floor mount and 3 hinges per door.
HARDWARE	Snap in door insert, concealed spring hinge, lock set and bumper, hat & coat hook.
DELIVERY & INSTALLATION	Supplied flat packed with plans for your own installation.
WARRANTY	polytec COMPACT laminate products carry a 10 year warranty, refer to the warranty terms and conditions on the polytec website for more information. Hardware carries a 1 year warranty supplied by Metlam Australia.
HOW TO SPECIFY	Partitioning System materials will be polytec system FH-CB-FM in colour

FH - CEILING BRACED - PEDESTAL MOUNTED



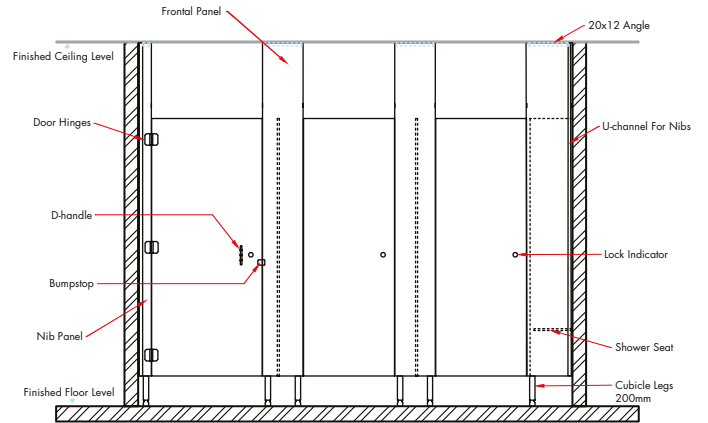
ORDER CODE	FH-CB-PM
PANEL SUBSTRATE	13mm COMPACT laminate
FEATURES	Full height front panel with ceiling U-channel brace, pedestal leg mount and 3 hinges per door.
HARDWARE	200mm high aluminium adjustable legs, snap in door insert, spring hinge, lock set and bumper, hat & coat hook.
DELIVERY & INSTALLATION	Supplied flat packed with plans for your own installation.
WARRANTY	polytec COMPACT laminate products carry a 10 year warranty, refer to the warranty terms and conditions on the polytec website for more information. Hardware carries a 1 year warranty supplied by Metlam Australia.
HOW TO SPECIFY	Partitioning System materials will be polytec system FH-CB-PM in colour

FH - CEILING FIXED - FLOOR MOUNTED

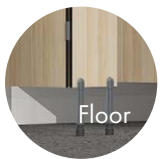


ORDER CODE	FH-CF-FM
PANEL SUBSTRATE	13mm COMPACT laminate
FEATURES	Full height front panel with L-bracket ceiling fixture, L-bracket floor mount and 3 hinges per door.
HARDWARE	Snap in door insert, concealed spring hinge, lock set and bumper, hat & coast hook, L-shape extrusion for ceiling and floor mounting.
DELIVERY & INSTALLATION	Supplied flat packed with plans for your own installation.
WARRANTY	polytec COMPACT laminate products carry a 10 year warranty, refer to the warranty terms and conditions on the polytec website for more information. Hardware carries a 1 year warranty supplied by Metlam Australia.
HOW TO SPECIFY	Partitioning System materials will be polytec system FH-CF-FM in colour

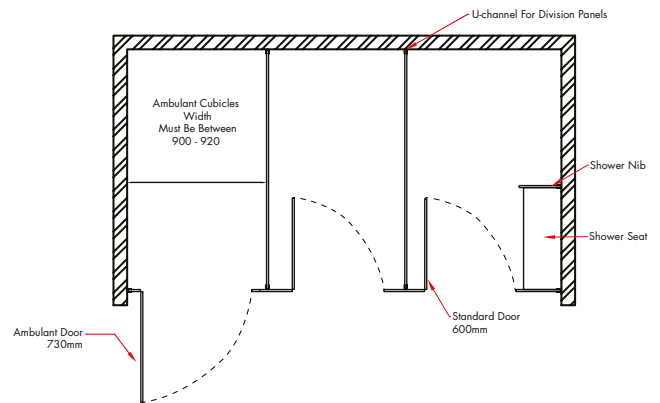
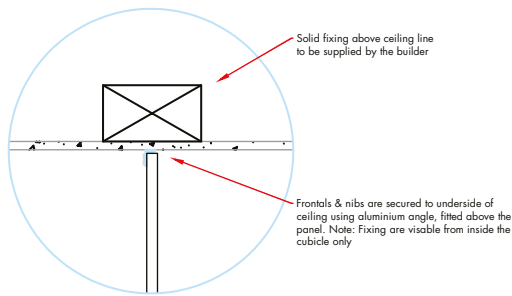
FH - CEILING FIXED - PEDESTAL MOUNTED



Ceiling

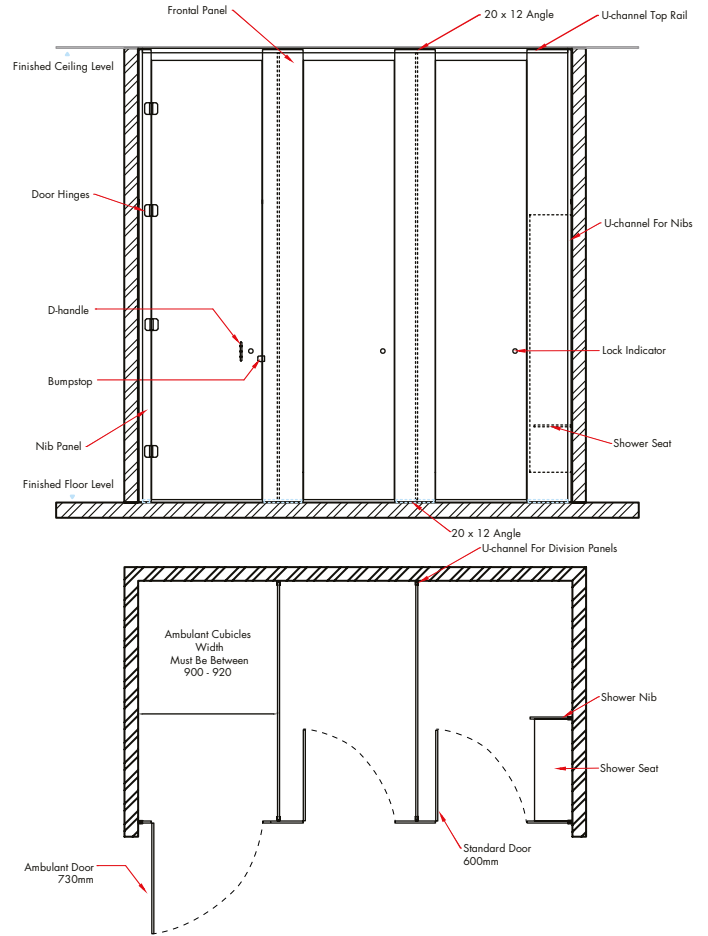


Floor



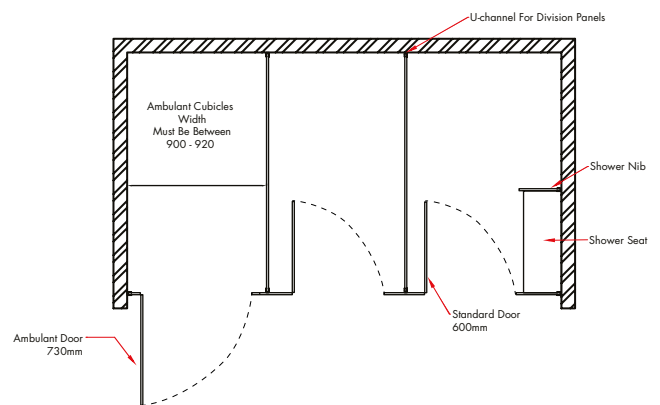
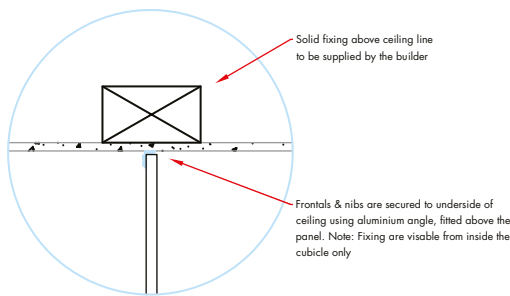
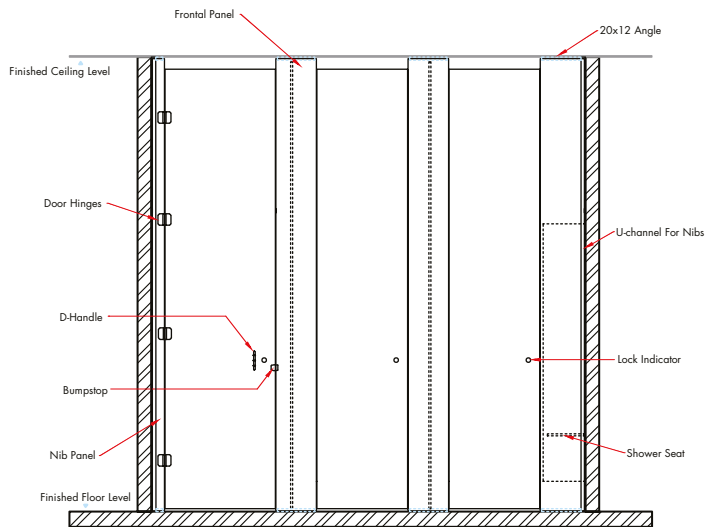
ORDER CODE	FH-CF-PM
PANEL SUBSTRATE	13mm COMPACT laminate
FEATURES	Full height front panel with L-bracket ceiling fixture, pedestal leg mount and 3 hinges per door.
HARDWARE	200mm high aluminium adjustable legs, snap door insert, spring hinge, L-shape extrusion for ceiling mounting, lock set and bumper, hat and coat hook.
DELIVERY & INSTALLATION	Supplied flat packed with plans for your own installation.
WARRANTY	polytec COMPACT laminate products carry a 10 year warranty, refer to the warranty terms and conditions on the polytec website for more information. Hardware carries a 1 year warranty supplied by Metlam Australia.
HOW TO SPECIFY	Partitioning System materials will be polytec system FH-CF-PM in colour

FH - UNISEX - CEILING BRACED



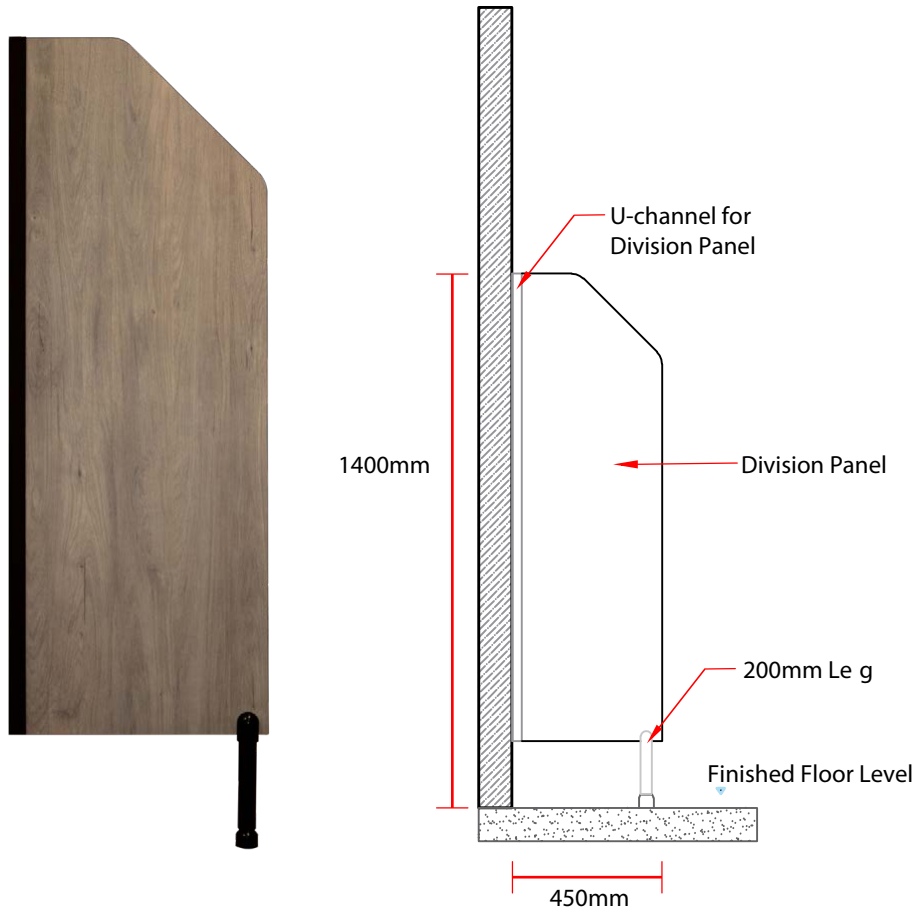
ORDER CODE	FH-U-CB
PANEL SUBSTRATE	13mm COMPACT laminate
FEATURES	Full height front panel and divisions with ceiling U-channel brace, L-bracket floor mount and 4 hinges per door.
HARDWARE	Snap in door insert, spring hinge, 300 series lock and bumper, hat & coat hook, optional Modesty Edge.
DELIVERY & INSTALLATION	Supplied flat packed with plans for your own installation.
WARRANTY	polytec COMPACT laminate products carry a 10 year warranty, refer to the warranty terms and conditions on the polytec website for more information. Hardware carries a 1 year warranty supplied by Metlam Australia.
HOW TO SPECIFY	Partitioning System materials will be polytec system FH-U-CB in colour

FH - UNISEX - CEILING FIXED



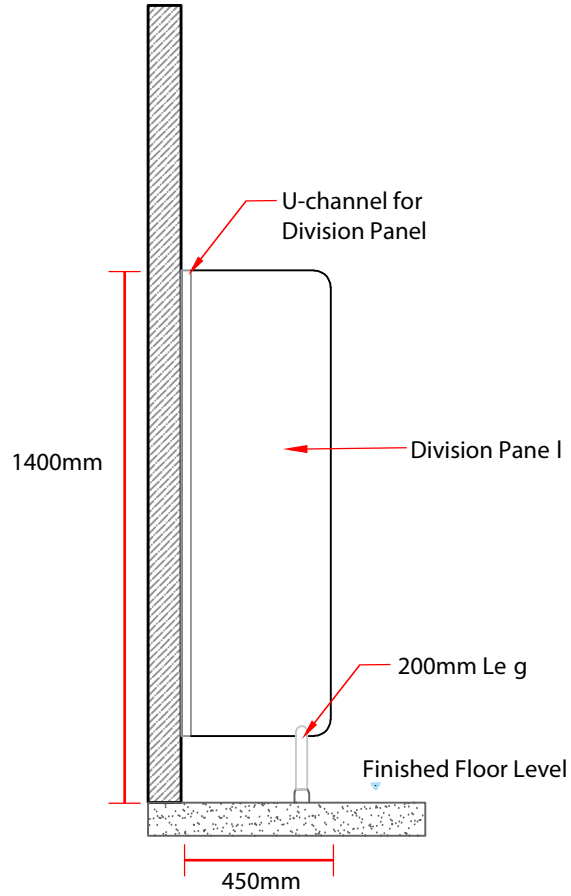
ORDER CODE	FH-U-CF
PANEL SUBSTRATE	13mm COMPACT laminate
FEATURES	Full height front panel and divisions with L-bracket ceiling fixture, L-bracket floor mount and 4 hinges per door.
HARDWARE	Snap in door insert, spring hinge, lock set and bumper, hat & coat hook, L-shape extrusion for ceiling mounting, optional Modesty Edge.
DELIVERY & INSTALLATION	Supplied flat packed with plans for your own installation.
WARRANTY	polytec COMPACT laminate products carry a 10 year warranty, refer to the warranty terms and conditions on the polytec website for more information. Hardware carries a 1 year warranty supplied by Metlam Australia.
HOW TO SPECIFY	Partitioning System materials will be polytec system FH-U-CF in colour

URINAL DIVISION - STANDARD



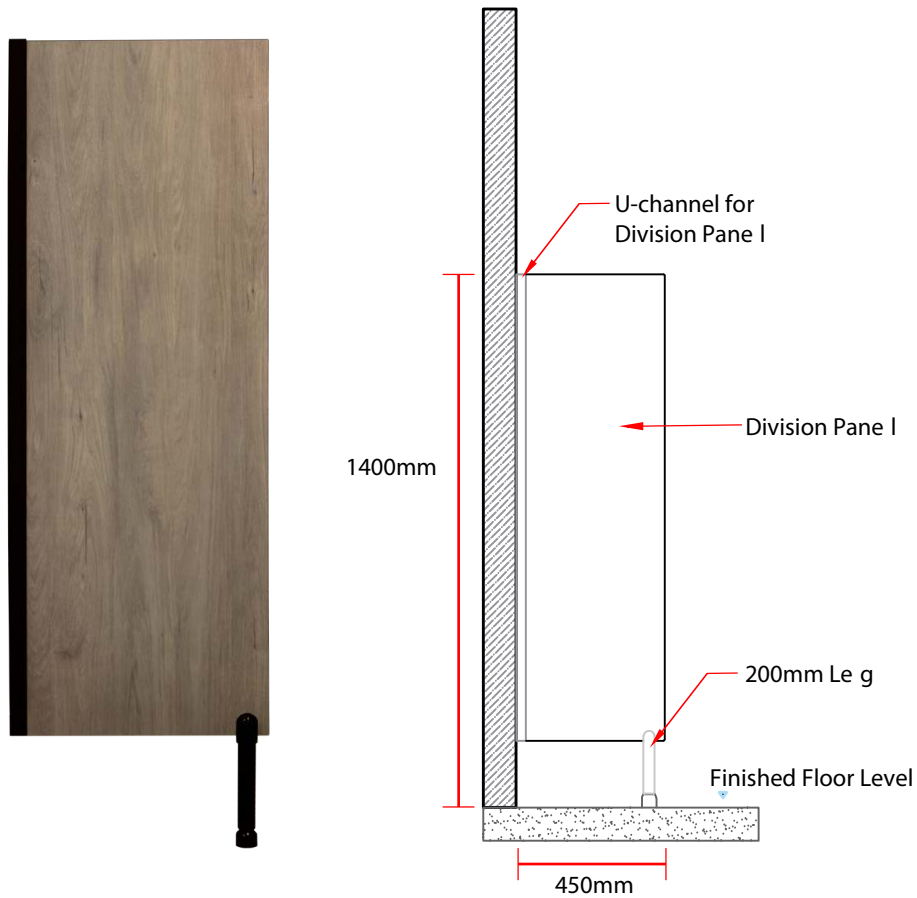
ORDER CODE	UD-ST
PANEL SUBSTRATE	13mm COMPACT laminate
FEATURES	1400mm (total) height x 450mm width divisional panel with top corner chamfer, 200mm leg and U-channel wall bracket.
HARDWARE	200mm leg and U-channel wall bracket.
DELIVERY & INSTALLATION	Supplied flat packed.
WARRANTY	polytec COMPACT laminate products carry a 10 year warranty, refer to the warranty terms and conditions on the polytec website for more information. Hardware carries a 1 year warranty supplied by Metlam Australia.
HOW TO SPECIFY	Urinal division materials will be polytec system UD-ST in colour

URINAL DIVISION - ROUNDED



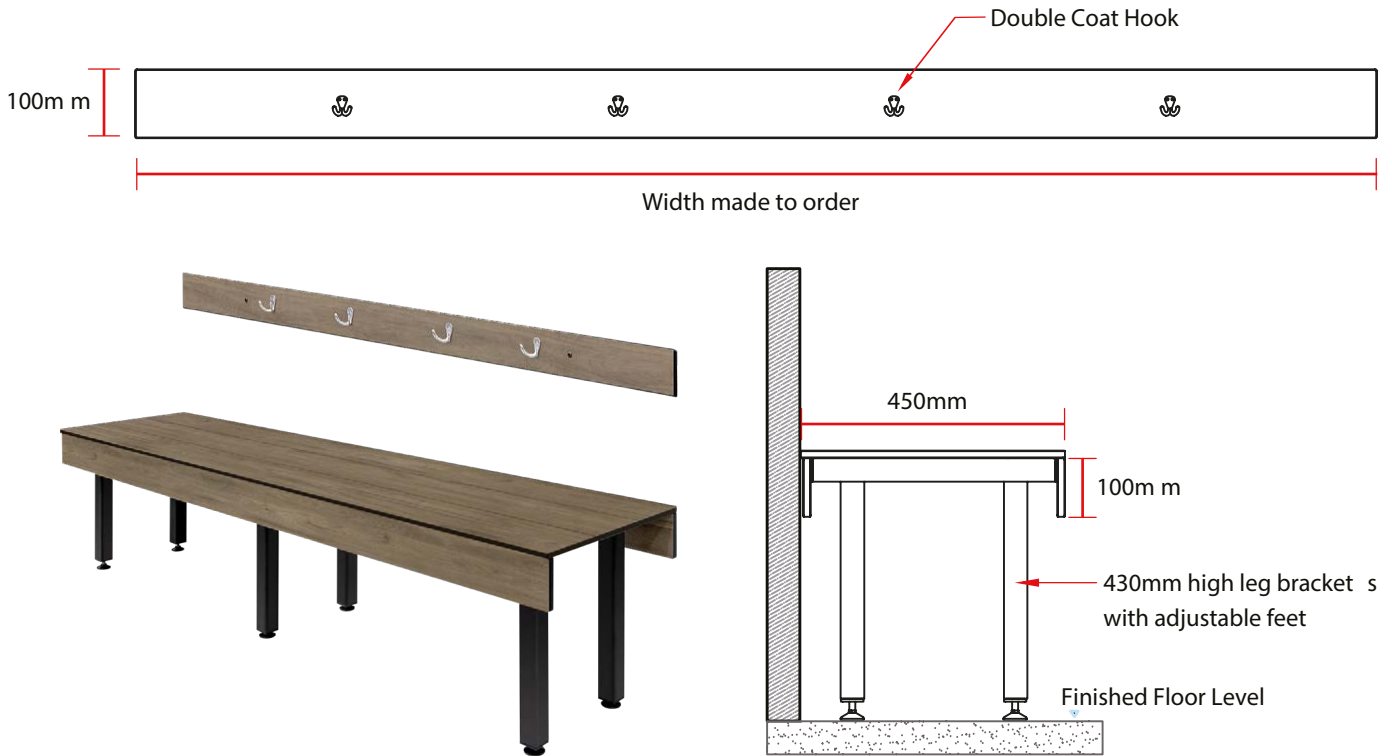
ORDER CODE	UD-RO
PANEL SUBSTRATE	13mm COMPACT laminate
FEATURES	1400mm (total) height x 450mm width divisional panel with rounded corners, 200mm leg and U-channel wall bracket.
HARDWARE	200mm leg and U-channel wall bracket.
DELIVERY & INSTALLATION	Supplied flat packed.
WARRANTY	polytec COMPACT laminate products carry a 10 year warranty, refer to the warranty terms and conditions on the polytec website for more information. Hardware carries a 1 year warranty supplied by Metlam Australia.
HOW TO SPECIFY	Urinal division materials will be polytec system UD-RO in colour

URINAL DIVISION - SQUARE



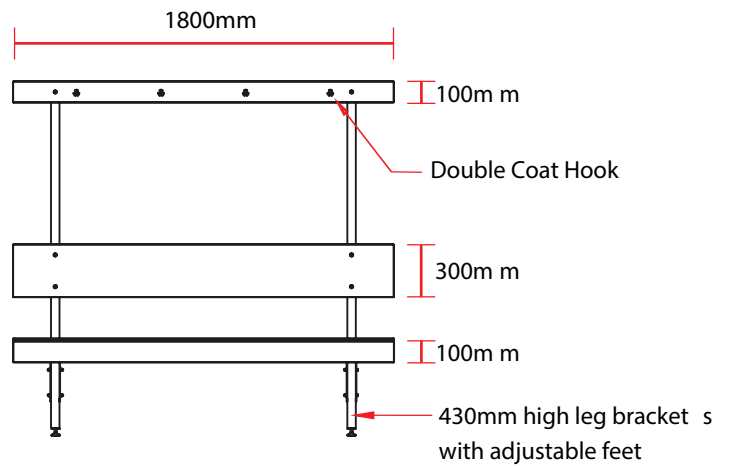
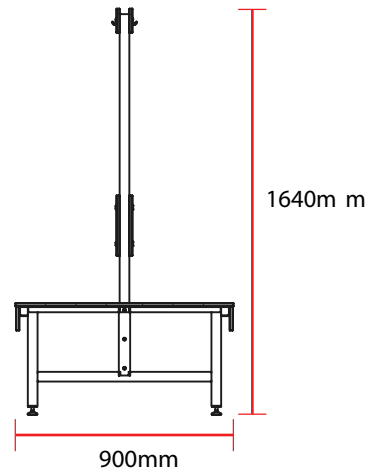
ORDER CODE	UD-SQ
PANEL SUBSTRATE	13mm COMPACT laminate
FEATURES	1400mm (total) height x 450mm width divisional panel with square (3mm radius) corners, 200mm leg and U-channel wall bracket.
HARDWARE	200mm leg and U-channel wall bracket.
DELIVERY & INSTALLATION	Supplied flat packed.
WARRANTY	polytec COMPACT laminate products carry a 10 year warranty, refer to the warranty terms and conditions on the polytec website for more information. Hardware carries a 1 year warranty supplied by Metlam Australia.
HOW TO SPECIFY	Urinal division materials will be polytec system UD-SQ in colour

SINGLE WALL MOUNTED BENCH SEAT WITH OPTIONAL COAT RAIL



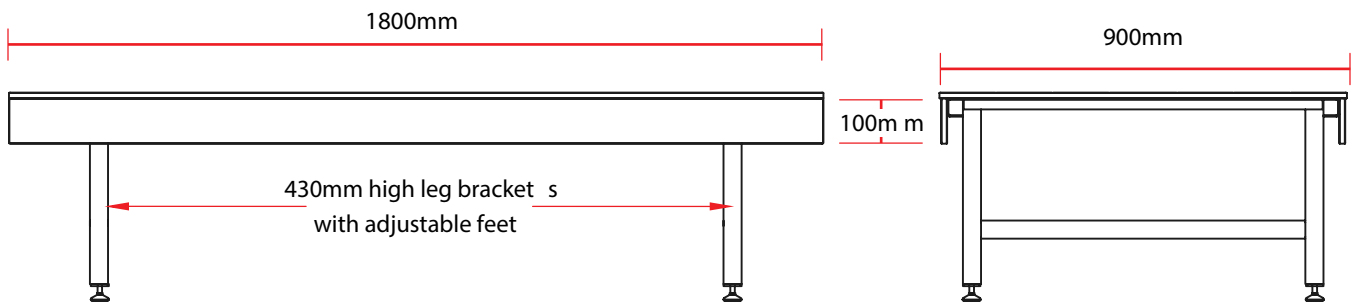
ORDER CODE	SWM-BS / WM-CR
PANEL SUBSTRATE	13mm COMPACT laminate
FEATURES	Wall mount single width bench seating. Wall mount coat hooks are an optional extra.
HARDWARE	430mm height legs with adjustable feet.
DELIVERY & INSTALLATION	Supplied flat packed.
WARRANTY	polytec COMPACT laminate products carry a 10 year warranty, refer to the warranty terms and conditions on the polytec website for more information. Hardware carries a 1 year warranty.
HOW TO SPECIFY	Wall mount seating will be polytec SWM-BS in colour

DOUBLE ISLAND BENCH SEAT WITH COAT RAILS



ORDER CODE	DI-BS-CR
PANEL SUBSTRATE	13mm COMPACT laminate
FEATURES	Stand alone double width with back rest and double coat hooks on both front and rear.
HARDWARE	430mm height legs with adjustable feet, upper rail with 4 coat hooks on both front and rear.
DELIVERY & INSTALLATION	Supplied flat packed.
WARRANTY	polytec COMPACT laminate products carry a 10 year warranty, refer to the warranty terms and conditions on the polytec website for more information. Hardware carries a 1 year warranty.
HOW TO SPECIFY	Island seating will be polytec DI-BS-CR in colour

DOUBLE BENCH SEAT ISLAND



ORDER CODE	DB-SI
PANEL SUBSTRATE	13mm COMPACT laminate
FEATURES	Stand alone double width.
HARDWARE	430mm height legs with adjustable feet.
DELIVERY & INSTALLATION	Supplied flat packed.
WARRANTY	polytec COMPACT laminate products carry a 10 year warranty, refer to the warranty terms and conditions on the polytec website for more information. Hardware carries a 1 year warranty.
HOW TO SPECIFY	Island seating will be polytec DB-SI in colour

HARDWARE

Black Matt

Satin Chrome



Door hinge



Door bumper



Door hinge



Door bumper



Hook with bumper



Slide lock



Hook with bumper



Slide lock



Door handle



Ambulant hand rail



Door handle



Ambulant hand rail



Lock indicator



Foot pedestal

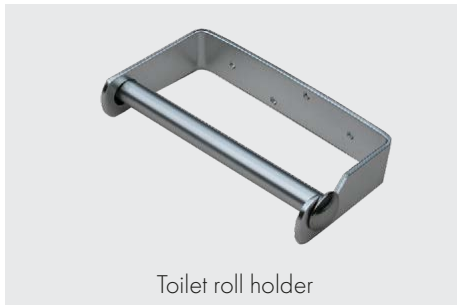


Lock indicator

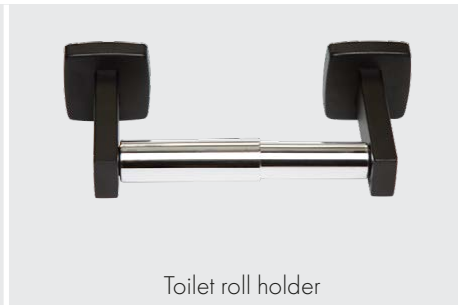


Foot pedestal

HARDWARE ACCESSORIES



Toilet roll holder



Toilet roll holder



Hand rail fix plate



Adjustable bench seat bracket

ENTRY SIGNS



Male Entry



Female Entry

Entry signs are manufactured using 5mm Black Matt Compact laminate, 1500mm high x 831mm wide.