

## Surano doors



Drawings are for illustrative purpose only, and are not true to scale.

COVER IMAGE: **SURANO** doors in Perugian Walnut Woodmatt.

**THERMOLAMINATED** Manhattan doors and drawers in Oyster Grey Smooth.

Dark coloured surfaces will show fingerprints and require more care and maintenance than lighter coloured surfaces. It is recommended to test a product sample prior to colour selection. **polytec** swatches and samples represent a small area of the overall colour structure. To view the large colour sample, visit [www.polytec.com.au](http://www.polytec.com.au).

The colours and details shown in this brochure are to the highest standards in printing. However, they should only be used as an indication of actual product colour. To order your free colour sample visit [www.polytec.com.au](http://www.polytec.com.au).

The use of our current samples gives the colour and finish that a customer would expect to receive. Samples are provided for colour and finish selection and **polytec** recommend testing a sample for fingerprint resistance and ease of cleaning. **polytec** does not guarantee exact colour matches across product ranges due to colour variation in each product group.

Visit [www.polytec.com.au](http://www.polytec.com.au) for specific care and cleaning information.

# SURANO

## doors



polytec

[www.polytec.com.au](http://www.polytec.com.au)

p 1300 300 547



polytec



## Surano doors

This shaker style door, using joinery, glued and dowelled in a multipiece construction will add an element of luxury to your home. Enhanced by the selection of either Woodmatt, Ravine, or Matt Melamine finishes or glass inserts, these five piece doors create a modern nostalgic feel in any space.

- 18mm thickness with 60mm rail
- Glued and dowelled joints ensuring strength and stability
- 9mm matching or contrast Melamine insert
- Glass or Mirror insert options
- Maximum size of 2400mm high by 1200mm wide
- Grain direction will always be horizontal through the top and bottom rails, and vertical through the side rails and centre panel
- Impact resistant to everyday knocks and bumps
- Individual inserts and rails will not be grain matched

### door inserts



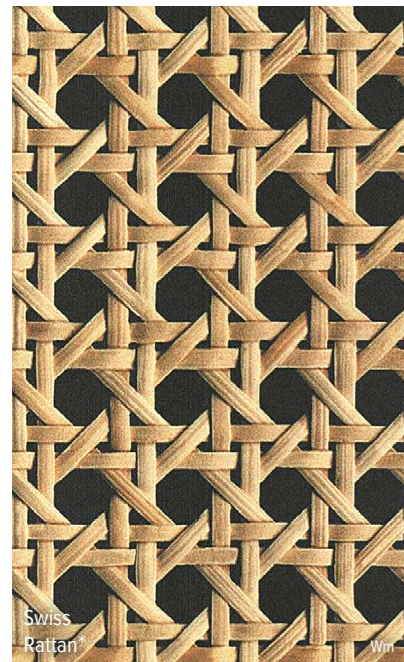
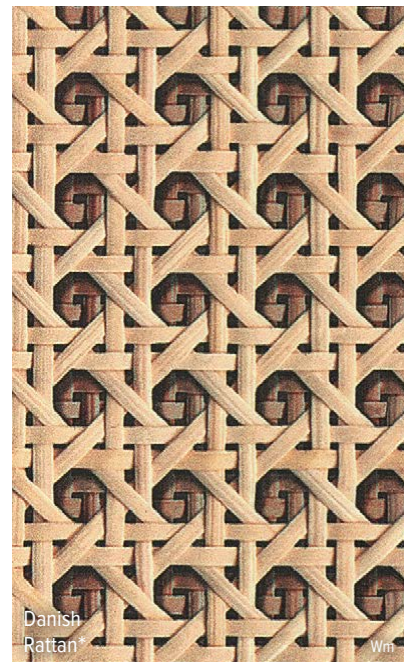
Matching Melamine    Contrasting Melamine    Starphire Black Glass



Smokey Grey Mirror    Mirror    Starphire White Glass



Fluted Glass    Clear Glass    Frosted Glass

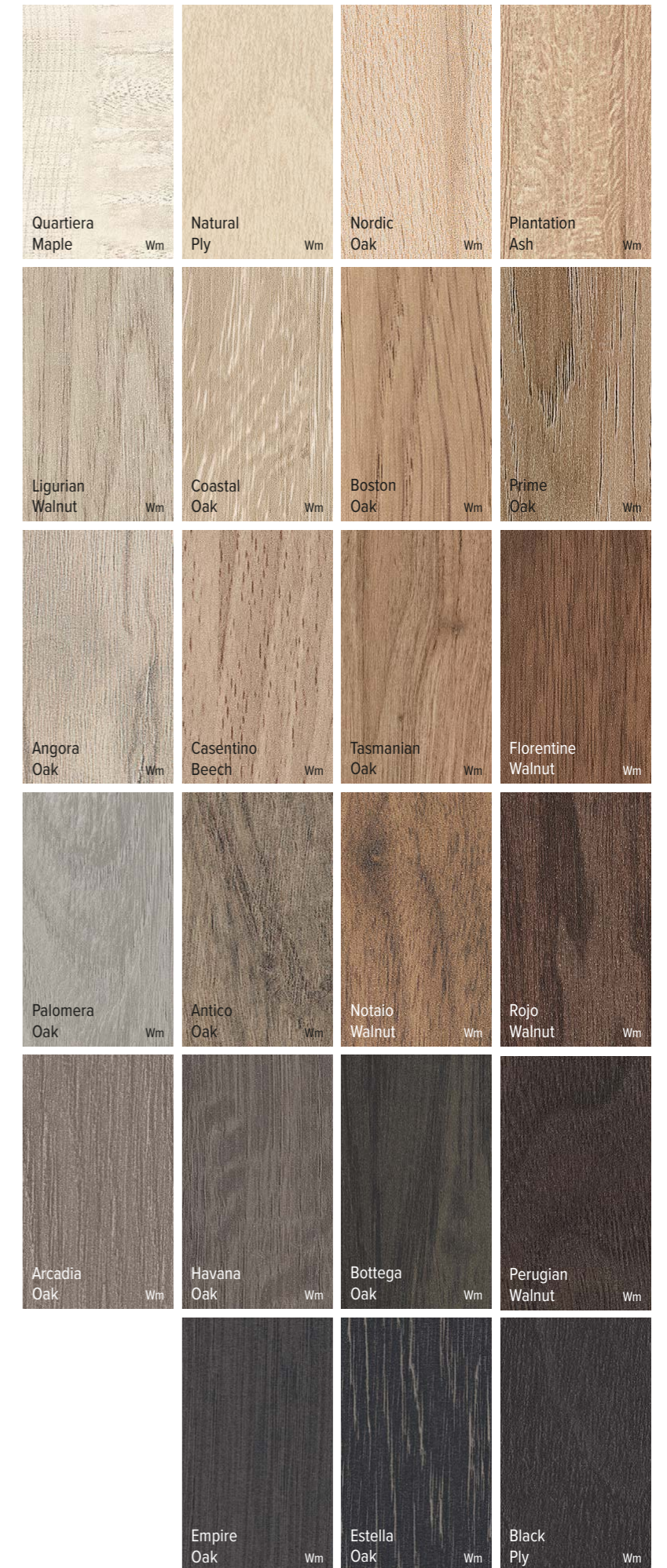


Available finishes Wm = Woodmatt

\* Abstract prints only available as door inserts

SURANO doors in Perugian Walnut Woodmatt.

THERMOLAMINATED Manhattan drawers in Oyster Grey Smooth.



Available finishes Wm = Woodmatt

polytec swatches and samples represent a small area of the overall colour structure. To view the large colour sample, visit [www.polytec.com.au](http://www.polytec.com.au). Dark coloured surfaces will show fingerprints and require more care and maintenance than lighter coloured surfaces. It is recommended to test a product sample prior to colour selection.

SURANO doors in Prime Oak Woodmatt.  
 THERMOLAMINATED Oblong Mirror in Prime Oak Woodmatt.



Matt /solid	Ravine /solid	Ravine /timberprint	
 Polar White M	 Blossom White R	 Distressed Wood R	 Natural Oak R
	 Gossamer White R	 Drifted Oak R	 Maison Oak R
	 Greige R	 Tessuto Milan R	 Artisan Oak R
	 Avion Grey R	 Maroso Milan R	 Café Oak R
	 Elemental Grey R		 Black Wenge R
	 Canterbury Grey R		

Available finishes M = Matt R = Ravine  
 polytec swatches and samples represent a small area of the overall colour structure.  
 To view the large colour sample, visit [www.polytec.com.au](http://www.polytec.com.au). Dark coloured surfaces will show fingerprints and require more care and maintenance than lighter coloured surfaces. It is recommended to test a product sample prior to colour selection.