

polytec

EVOLUTION

PROUDLY SUPPORTING



McGrath
foundation

Find your local supporting cabinet maker
www.polytec.com.au/mcgrath-foundation

polytec

www.polytec.com.au

p 1300 300 547

ISSUE: 11b



polytec offer an express sample service.

Visit www.polytec.com.au to order your free sample.

EVOLUTION

doors & panels



EVOLUTION doors & panels

Style the surfaces within your project using **polytec's** extensive 18mm Evolution range. Blend unique textures, tones, and finishes to achieve a contemporary look.

Mix warm colours with cool accents, or matt surfaces with a timbergrain to create visual interest. Choosing from the Evolution range enables you to achieve a truly leading-edge design. Tall cupboards featuring timbergrains or silky finishes that stretch from floor to ceiling provide the perfect backdrop for your choice of ultra glossy or super matt doors and drawers.

The Evolution range is a collection of **polytec's** leading and most innovative ranges – Createc, Venette, Woodmatt, Ravine, Legato, Ultramatt and Ultraglaze. Designed to be complementary, these ranges allow you to infuse your spaces with the latest colours and finishes.

polytec's Createc range allows your kitchen to shine. Its ultra high gloss surface delivers sharp lines and a polished, sophisticated finish.

polytec's leading edge innovation in decorative doors & panels delivers exceptional fingerprint resistant technology in the purest matt form. The silky smooth finish of Venette creates an inviting and pleasant touch experience, whilst the pure matt surface assures low light reflection.

Create a feature using **polytec's** new 18mm Woodmatt range, incorporating colours such as Batten Oak and Rattan.

polytec's Ravine range showcases a raw embossed natural touch timber surface lightly coloured with warm and inviting shades.

polytec's Legato range features a super matt, non-reflective finish. This subtle, understated look is imbued with lighter, timber tones and delivers a fresh refined presence.

polytec's Ultramatt and Ultraglaze doors & panels are an acrylic, premium surface appropriate for residential and commercial joinery. The fingerprint and scuff resistant properties of Ultramatt make it a suitable option for high-traffic zones, while Ultraglaze remains an innovative high gloss finish in the decorative surfaces industry.

Blend your choices to capture the latest design trends and style your ideal space.



Doors and panels in **VENETTE** Botanic.
Butlers pantry doors in **MELAMINE** Notaio Walnut Matt.



Doors, drawers and panels in **CREATEC** New Ultra White.
Overhead doors and shelving in **RAVINE** Sepia Oak.



polytec swatches and samples represent a small area of the overall colour structure.
To view the large colour sample, visit www.polytec.com.au.
Dark coloured surfaces will show fingerprints and require more care and maintenance than lighter coloured surfaces. It is recommended to test a product sample prior to colour selection.

Bar panels in **VENETTE** Black.
 Drawers in **VENETTE** Ultra White.
 Panelling in **MELAMINE** Tasmanian Oak Woodmatt.



Venette /pure matt



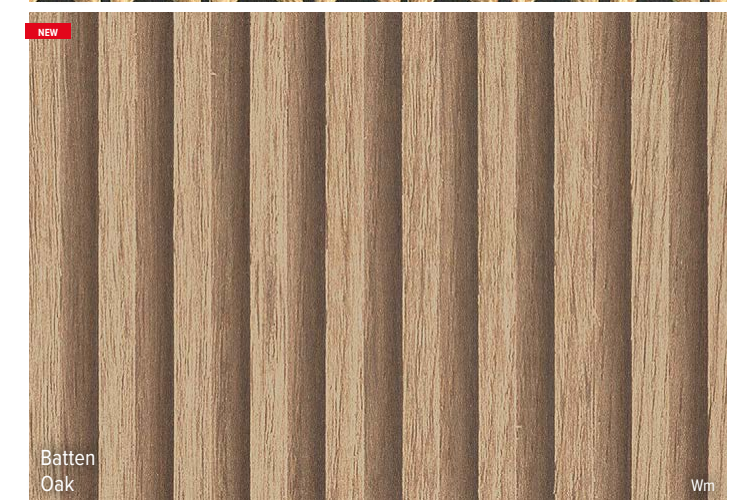
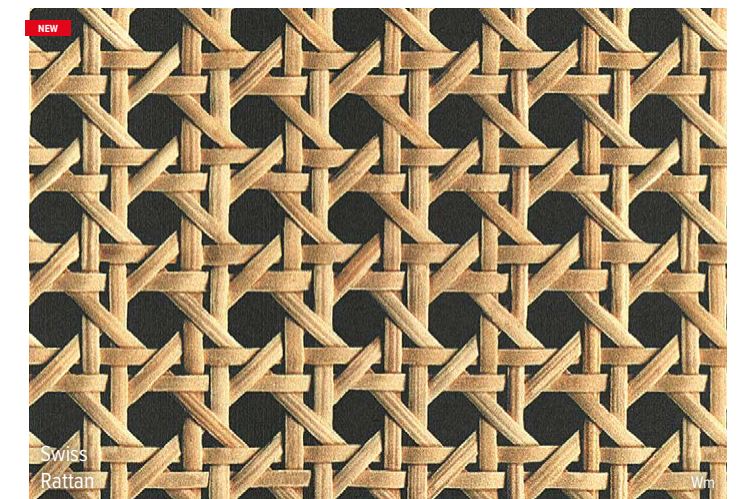
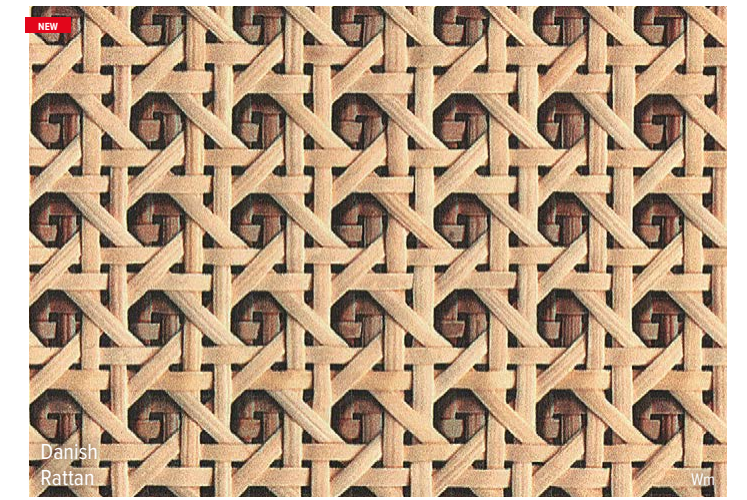
polytec swatches and samples represent a small area of the overall colour structure. To view the large colour sample, visit www.polytec.com.au. Dark coloured surfaces will show fingerprints and require more care and maintenance than lighter coloured surfaces. It is recommended to test a product sample prior to colour selection.

Available finishes V = Venette



Wall lining in **LAMINATE** Batten Oak Woodmatt and **LAMINATE** Prime Oak Woodmatt.
 Bedside table in **XENOLITH** Marmo di Monte Smooth.
 Wardrobe **THERMOLAMINATED** Sussex door frames in Prime Oak Woodmatt
 with 9mm **MELAMINE** Batten Oak Woodmatt inserts.
 Wardrobe panels in 16mm **MELAMINE** Prime Oak Woodmatt.
 Drop front benchtop in **XENOLITH** Marmo di Torre Smooth.
 Wall lining in **LAMINATE** Marmo di Torre Smooth.

Woodmatt / embossed woodgrain



Available finishes Wm = Woodmatt



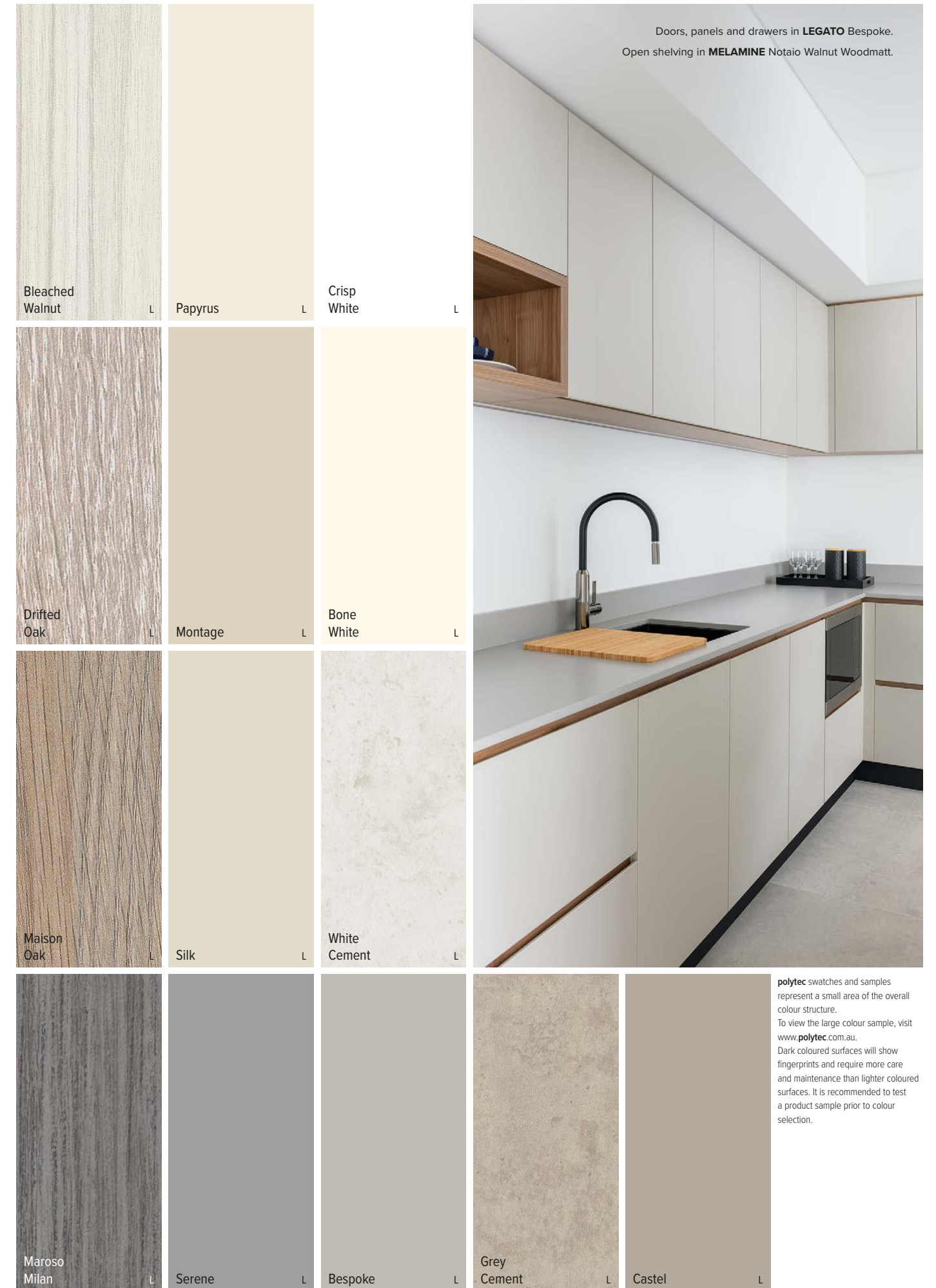


Doors, panels and drawers in **LEGATO** Bespoke and **MELAMINE** Notaio Walnut Woodmatt.

Pantry doors in **VENETTE** Black.



Legato /super matt



Doors, panels and drawers in **LEGATO** Bespoke.
Open shelving in **MELAMINE** Notaio Walnut Woodmatt.



polytec swatches and samples represent a small area of the overall colour structure. To view the large colour sample, visit www.polytec.com.au. Dark coloured surfaces will show fingerprints and require more care and maintenance than lighter coloured surfaces. It is recommended to test a product sample prior to colour selection.

Available finishes L = Legato



Doors, panels and drawers in **ULTRAMATT Black**.
Overhead cupboard and pantry doors in **MELAMINE Angora Oak Woodmatt**.

Ultramatt / premium matt

White Um	Jasmine Um	Sterling Um
Pewter Metallic Um	Mink Um	Lava Um
Mineral Metallic Um	Obsidian Metallic Um	Black Um
NEW Evergreen Um	NEW Navy Um	

polytec swatches and samples represent a small area of the overall colour structure. To view the large colour sample, visit www.polytec.com.au. Dark coloured surfaces will show fingerprints and require more care and maintenance than lighter coloured surfaces. It is recommended to test a product sample prior to colour selection.

Available finishes Um = Ultramatt



Doors and panels in **ULTRAGLAZE** Superior White.

Ultraglaze / premium gloss

Arctic Ice Ug	Superior White Ug	Cream Ug
Pearl Metallic Ug	Royal Oyster Ug	Champagne Metallic Ug
Cloudy Grey Ug	Anthracite Metallic Ug	Phantom Black Ug

polytec swatches and samples represent a small area of the overall colour structure. To view the large colour sample, visit www.polytec.com.au. Dark coloured surfaces will show fingerprints and require more care and maintenance than lighter coloured surfaces. It is recommended to test a product sample prior to colour selection.

Available finishes Ug = Ultraglaze

Doors, drawers and panels in **LEGATO** Crisp White.
Overhead cupboard doors in **MELAMINE** Tasmanian Oak Woodmatt.



Responsible Wood
RW/1-31-145



PEFC
PEFC/21-31-145



AUSTRALIAN MADE
AND OWNED

ENVIRONMENT & SUSTAINABILITY

At **polytec**, sustainability is ingrained in the core of our business operations, products, and work practices. Our continual dedication to improving and appropriately managing the environmental impact of our products involves our commitment to steadfastly reducing our carbon footprint, minimising waste, optimising energy efficiency and integrating ethically sourced materials into our product ranges.

Our MDF and Particleboard are manufactured from managed and renewable plantation pine that has been Green Tag, Responsible Wood and PEFC certified. All **polytec** board products are manufactured from E0 or E1 substrates, with particleboard now made from a percentage of recycled wood material.

In our pursuit of responsible waste management, we implement various recycling programs encompassing aluminium, metals, used oils, and timber waste, which is repurposed into packaging, particleboard, and energy. We actively engage with local government environmental initiatives, subject ourselves to voluntary audits, and uphold our internal Energy and Carbon Management Policy (ECM), aligned with the Australian Government's Energy Efficiency Opportunities (EEO) program.

Our network of national facilities boasts over 53,000 solar panels, generating 15,238,000 kWh of renewable energy — equivalent to planting 7,377 trees and preventing the emission of 11,000 tonnes of CO2. The Oberon facility is Australia's largest rooftop solar system, with 27,000 panels spread across 8 hectares of rooftop.

In our ongoing commitment to sustainability, **polytec** continues to refine and enhance our practices to contribute to the establishment of a circular economy, fostering a better future for all.

polytec doors, panels and benchtops are certified Australian Made & Owned.

CARE & MAINTENANCE

polytec do not recommend the use of Evolution products in a sliding or non-fixed application (hinged) unless the use of a mechanical stabilising system is fitted. Evolution doors and panels are supplied with a protective film to protect the surface during installation. This film must be removed within three months of installation.

Your Evolution doors and panels are made from a Moisture Resistant Medium Density Fibreboard (MR MDF), but as with many wood based panels, they are not waterproof. Care should be taken to wipe up spills immediately, ensuring the doors are not exposed to high or continuous levels of moisture, steam and humidity.

Evolution doors and panels should be cleaned by wiping down with a damp soft cloth and warm soapy water. For more stubborn stains use a mild household cleaning spray. Always ensure you refer to the recommendations provided by the manufacturer of the cleaning product before use.

By following these simple steps you should retain a beautiful kitchen surface for many years.

Visit www.polytec.com.au for specific care and cleaning information.

IMPORTANT

Darker colours will show superficial wear and tear more readily than lighter coloured surfaces and require more care and maintenance.

Creteac and Venette are a painted product and as with many painted materials a slight odour may occur when fresh, or if not permitted to air. The products comply with Green Building Council of Australia. Green Star Design & As Built V1.3 – 13.1.2B & 13.2. Green Star Interiors V1.3 – 12.1.2B for emission of VOCs.

The colours and details shown in this brochure are to the highest standards in printing. However, they should only be used as an indication of actual product colour. To order your free colour sample visit www.polytec.com.au.

polytec swatches and samples represent a small area of the overall colour structure, to view a large colour sample or a full sheet design, visit www.polytec.com.au.

The use of our current samples gives the colour and finish that a customer would expect to receive. Samples are provided for colour and finish selection and **polytec** recommend testing a sample for fingerprint resistance and ease of cleaning. **polytec** does not guarantee exact colour matches across product ranges due to colour variation in each product group.

COMPLEMENTARY RANGES

- BENCHTOPS** range
- MELAMINE** doors & panels
- XENOLITH**
- THERMOLAMINATED** doors & panels
- STECCAWOOD** prefinished decorative battens
- ALFRESCO & ALUMINIUM** framed doors
- 35mm **ARCHITECTURAL** doors
- WARDROBE** range

COVER IMAGE: Doors and panels in **VENETTE** Botanic.