

polytec

COMPACT laminate

polytec

www.polytec.com.au

p 1300 300 547

ISSUE: 03 |



polytec offer an express sample service.

Visit www.polytec.com.au to order your free sample.

PROUDLY
SUPPORTING



Find your local supporting cabinet maker
www.polytec.com.au/mcgrath-foundation

Create your look

Splashback in **COMPACT** laminate Calacutta Grey Smooth.
Vanity drawers in **MELAMINE** Tasmanian Oak Woodmatt.



COMPACT laminate

As the consummate, long-lasting, low-maintenance, decorative panel, **polytec's** Compact laminate is a go-to product for the most demanding professional interior and external joinery environments.

Being manufactured from quality materials embeds **polytec's** Compact laminate with excellent technical characteristics. It's totally impervious to water and has outstanding impact, stain and wear resistance, along with excellent hygienic properties.

Characterised by a distinctive black core, Compact laminate holds extra appeal on the aesthetic front and as a structurally sound material.

The introduction of Smooth and Woodmatt finishes into **polytec's** Compact laminate range avails exciting new design possibilities for commercial projects. **polytec's** Smooth finish is a sleek, flat surface with minimal reflectance available in a range of stone patterns. **polytec's** ever-popular Woodmatt finish has been introduced to the range, allowing for greater design flexibility with a realistic woodgrain feel in timber designs and a new solid, Cinder Woodmatt.





Available edge profiles



Shark Nose



2mm Double Fine Edge



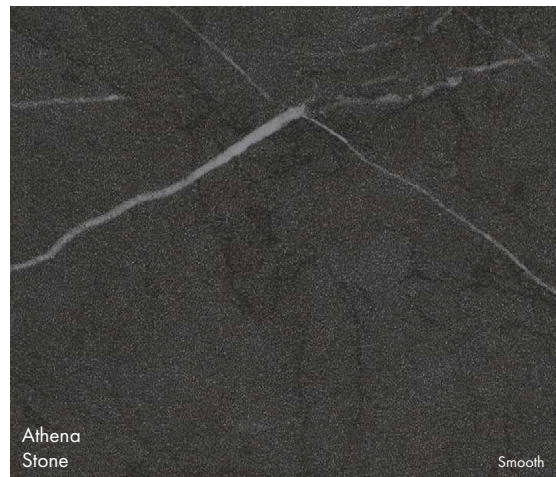
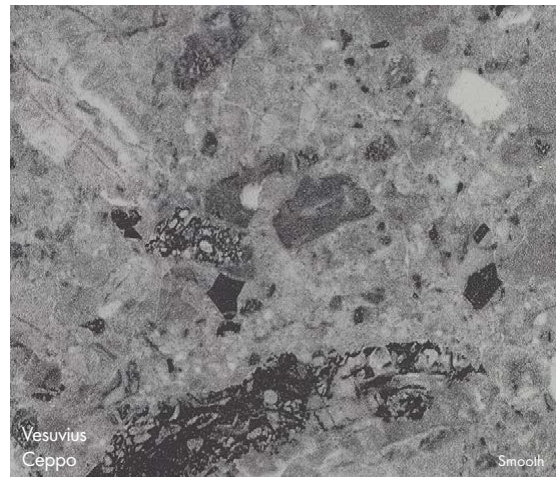
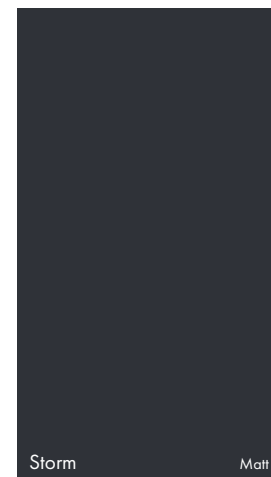
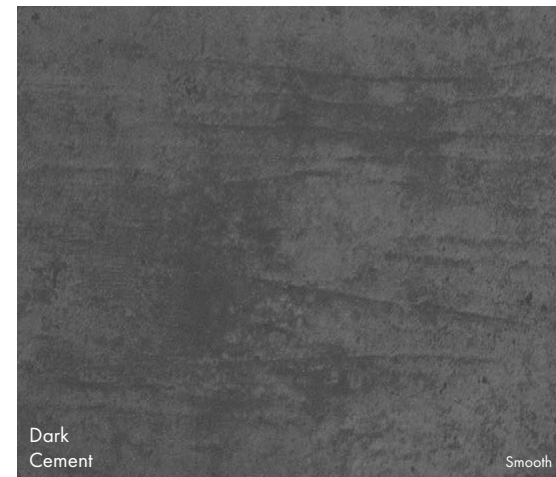
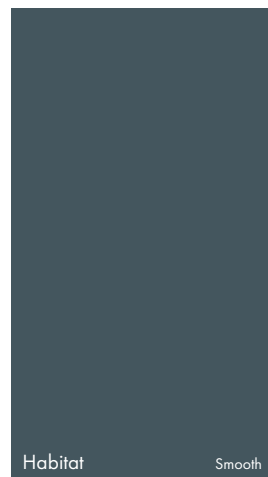
Aris



Reception counter panels in COMPACT laminate Natural Oak RAVINE.

COMPACT laminate

polytec swatches and samples represent a small area of the overall colour structure. To view the large colour sample, visit www.polytec.com.au.



Refer to the polytec Availability Guide for sheet size and substrate options.

Dark coloured surfaces will show fingerprints and require more care and maintenance than lighter coloured surfaces. It is recommended to test a product sample prior to colour selection.

Wall Panelling in **COMPACT** laminate Calacutta D'oro Smooth.

Vanity in **COMPACT** laminate Athena Stone Smooth.



ENVIRONMENT & SUSTAINABILITY

At **polytec**, sustainability is ingrained in the core of our business operations, products, and work practices. Our continual dedication to improving and appropriately managing the environmental impact of our products involves our commitment to steadfastly reducing our carbon footprint, minimising waste, optimising energy efficiency and integrating ethically sourced materials into our product ranges.

Our MDF and Particleboard are manufactured from managed and renewable plantation pine that has been Green Tag, Responsible Wood and PEFC certified. All **polytec** board products are manufactured from E0 or E1 substrates, with particleboard now made from a percentage of recycled wood material.

In our pursuit of responsible waste management, we implement various recycling programs encompassing aluminium, metals, used oils, and timber waste, which is repurposed into packaging, particleboard, and energy. We actively engage with local government environmental initiatives, subject ourselves to voluntary audits, and uphold our internal Energy and Carbon Management Policy (ECM), aligned with the Australian Government's Energy Efficiency Opportunities (EEO) program.

Our network of national facilities boasts over 53,000 solar panels, generating 15,238,000 kWh of renewable energy – equivalent to planting 7,377 trees and preventing the emission of 11,000 tonnes of CO2. The Oberon facility is Australia's largest rooftop solar system, with 27,000 panels spread across 8 hectares of rooftop.

In our ongoing commitment to sustainability, **polytec** continues to refine and enhance our practices to contribute to the establishment of a circular economy, fostering a better future for all.

polytec doors, panels and benchtops are certified Australian Made & Owned.

CARE & MAINTENANCE

The surface of **polytec's** Compact laminate is made from a stain-resistant melamine based resin. The toughness and high impermeability of this surface means that **polytec's** Compact laminate should require no more than wiping with a soft cloth, dampened with plain water or a household detergent mix to remove all common household spills.

For more stubborn stains use a mild household cleaning spray. Always ensure you refer to the recommendations provided by the manufacturer of the cleaning product before use.

By following these simple steps you should retain a beautiful surface for many years.

Visit www.polytec.com.au for specific care and cleaning information. Darker colours will show superficial wear and tear more readily than lighter coloured surfaces and require more care and maintenance.

The colours and details shown in this brochure are to the highest standards in printing. However, they should only be used as an indication of actual product colour. To order your free colour sample visit www.polytec.com.au.

polytec swatches and samples represent a small area of the overall colour structure, to view a large colour sample or a full sheet design, visit www.polytec.com.au.

The use of our current samples gives the colour and finish that a customer would expect to receive. Samples are provided for colour and finish selection and **polytec** recommend testing a sample for fingerprint resistance and ease of cleaning. **polytec** does not guarantee exact colour matches across product ranges due to colour variation in each product group.

COMPLEMENTARY RANGES

EVOLUTION range

MELAMINE doors & panels

BENCHTOPS range

THERMOLAMINATED doors & panels

COMMERCIAL range

ALFRESCO & ALUMINIUM framed doors

XENOLITH premium coloured core

WARDROBE range

STECCAWOOD prefinished decorative battens

35mm ARCHITECTURAL doors